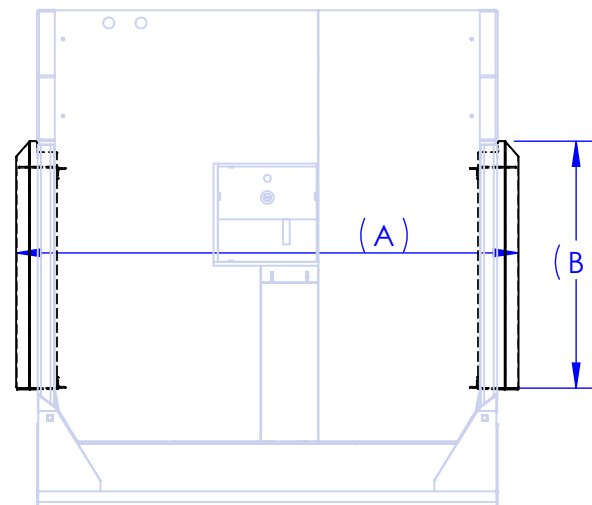
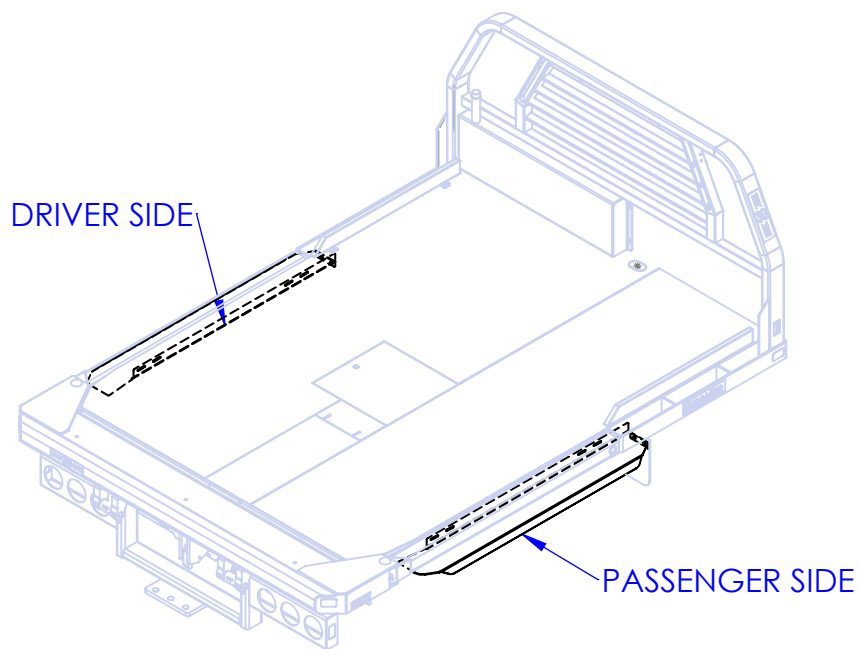


| Part Number | Description | Recommend Bed Types | Drawing # | A" | B" | Installation type |
|----------------|--------------------------------|--|-------------|--------|--------|-------------------|
| OP-FB-384 | FILLER BARS, HB3200& HB3300 | HB3200 or H3300 | 90-0220 | 82 3/4 | 55 | Weld on |
| OP-FB-84 | 100 FILLER BARS | HB200, HB300 or HB305 | 90-0220 | 81 3/4 | 47 | Weld on |
| OP-FL-392 | HB3200 & 3300 92"FENDER FLARES | HB3200 or H3300 | 90-0210 | 92 | 59 1/4 | Bolt on |
| OP-FL-395 | HB3200 & 3300 92"FENDER FLARES | HB3200 or H3300 | 90-0211 | 95 | 59 1/4 | Bolt on |
| OP-FL-88 | 100 88" FLARES | HB200, HB300 or HB305 | 90-0206 | 88 | 45 1/4 | Weld on |
| OP-FL-92 | 100 92" FLARES | HB200, HB300 or HB305 | 90-0207 | 91 1/2 | 45 1/4 | Weld on |
| OP-FL-9250 | 150 STANDARD FLARE | HB250 HB350 or HB550 | 90-0202 | 92 | 52 | Bolt on |
| OP-FL-9255 | 155 STANDARD FLARE | HB250 HB355 or HB555 | 90-0204 | 92 | 56 1/2 | Bolt on |
| OP-FL-9255 EXT | FLARE EXT- FL9255 | EXTENSION FOR OP-FL9255 FOR FORD 6.4 and 6.7L ON HB250, 355, 555 | FL-9255 EXT | | | Bolt on |
| OP-FL-95 | 100 95" FLARES | HB200 or HB300 | 90-0208 | 94 1/4 | 45 1/4 | Weld on |
| OP-FL-9550 | 150 WIDE FLARE | HB250 HB350 or HB550 | 90-0203 | 95 | 51 1/2 | Bolt on |
| OP-FL-9555 | 155 WIDE FLARE | HB250 HB355 or HB555 | 90-0205 | 95 | 56 1/2 | Bolt on |



| REV. | DESCRIPTION | DATE | APPROVED |
|------|-----------------|----------|----------|
| A | INITIAL RELEASE | 6/5/2014 | |

PROPRIETARY AND CONFIDENTIAL
THE INFORMATION CONTAINED IN THIS
DRAWING IS THE SOLE PROPERTY OF TRIPLE
C INC. ANY REPRODUCTION IN PART OR
AS A WHOLE WITHOUT THE WRITTEN
PERMISSION OF TRIPLE C INC. IS PROHIBITED.

| | |
|--|----|
| DIMENSIONS ARE IN INCHES TOLERANCES: FRACTIONAL $\pm 1/16$ ANGULAR: MACH ± 1 BEND \pm TWO PLACE DECIMAL ± 010 THREE PLACE DECIMAL ± 005 | |
| MATERIAL | -- |
| DO NOT SCALE DRAWING | |

| | |
|---|-----------|
| NAME | DATE |
| DRAWN HEATH | 7/25/2014 |
| PART # | |
| ASM # | SEE DWG |
| COMMENTS: | |
| HYDRA BED FLARE APPLICATION GUIDE | |

| | |
|------------------------------------|---------------------|
| P.O. BOX 248, SABETHA, KS 66534 | |
| TRIPLE C INC. | |
| SIZE A | DWG. NO. 90-0200 |
| SCALE: 1:35 | WEIGHT: -- |
| SHEET 1 OF 1 | |